

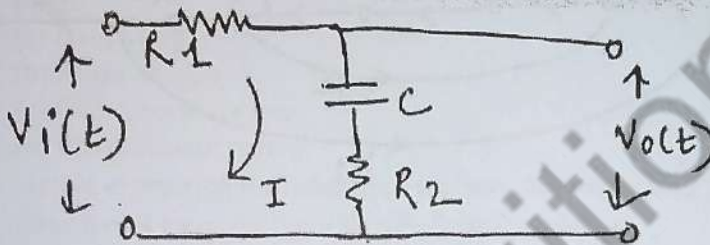


N.B:

- (1) Attempt **four** questions, question **no:1** is Compulsory.
- (2) Assume suitable data wherever required.
- (3) Answers to the questions should be grouped together.
- (4) Figure to the **right** of question indicates **full** marks.

1. Attempt all:

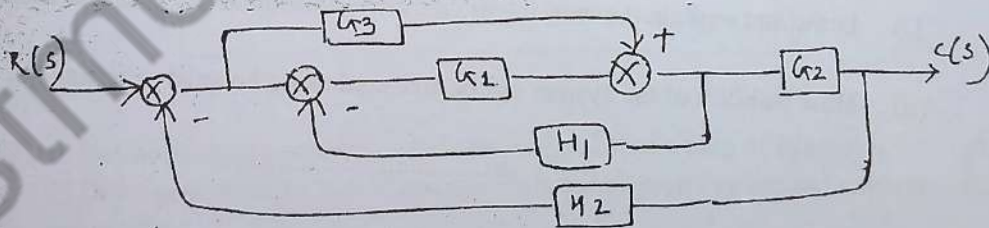
- (a) Define accuracy, precision, linearity and sensitivity 20
- (b) Find the transfer function of the given electrical network



- (c) List various types of temperature transducers and write the applications of each transducers
- (d) Explain basic telemetry system
- (e)  $s^3 - 4s^2 + s + 6 = 0$  is the characteristic equation of a certain control system. Determine its stability by Hurwitz method

2.

- (a) Explain measurement of inductance using Maxwell bridge. Also list the applications of it 10
- (b) Using Block diagram reduction techniques, find closed loop transfer function 10



3

- (a) Sketch the root locus of a unity feedback control system with  $G(s) = \frac{K}{s(s+5)(s+10)}$ . Comment on the stability 10
- (b) A Unity feedback control system has  $G(S) = \frac{80}{s(s+2)(s+20)}$ . Draw the bode plot and predict stability y

4

(a) Explain the components of analog data acquisition system

05

(b) For a unity feedback system

$$G(s) = \frac{k}{s(1+0.4s)(1+0.25s)}$$

find range of values of K, marginal value of K and frequency of sustained oscillations

05

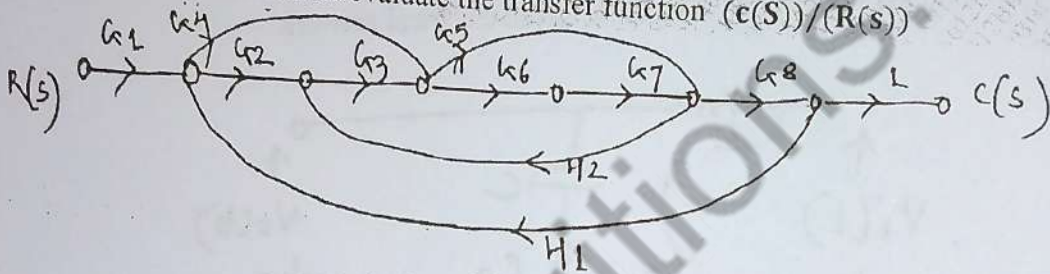
(c) Explain in detail the working principal of LVDT with neat diagram and explain its application

10

5

(a) Using Mason's Gain formula evaluate the transfer function  $(c(s))/R(s)$

10



(b) Explain the working principle of Q meter. Mention the sources of errors in Q meter

10

6

(a) (i) Explain multiplexing and discuss any one multiplexing system  
 (ii) For a unity feedback system having open loop transfer function

05

$$\frac{K(s+2)}{s(s^3 + 7s^2 + 12s)}$$

Find the type of system and all error coefficients

05

(i) Draw and explain the working of capacitive transducer for pressure measurement

05

(ii) How stability of the system can be analyzed using Nyquist criterion

05

.....